

not  
5/11/90

MAY 11 1990

Hazardous Materials Management

Question H176: On a flow chart basis, please describe the progress of sites by year through the process of land status assessment, preliminary site assessment, site investigation, and expanded site investigations.

-- For those sites known to be contaminated, please identify them beginning with the site investigation stage.

Answer:

<u>YEAR</u>	<u>INVENTORY (LSA)</u>	<u>PA</u>	<u>SI</u>	<u>ESI</u>	<u>CUMULATIVE ANNUAL ESIs</u>
1	125				
2	125	45	4		
3	125	45	10	1	(1)
4	125	45	10	4	(5)
5	125	45	10	4	(7)
6	125	45	10	4	(8)
7	125	45	10	4	(7)
8	125	45	10	4	(8)
9	125	45	10	4	(7)
10	125	45	10	4	(8)

In the Bureau's experience, about 125 sites are found in inventory procedures and examined by land status assessments (LSAs) in an average year. This number will be slightly higher in FYs 1990 - 1994 due to intensive inventories. Of the 125 sites found and examined, approximately 45 will fit the profile (ownership, indication or suspicion of contamination, etc). requiring a preliminary assessment (PA). In most cases, there will be a delay of 3 - 12 months between the end of an LSA and the beginning of a PA due to the procurement cycle, field season availability, and contractor schedules. PAs take 3 - 4 months to prepare and review. Most sites are eliminated in this phase as not requiring further action.

If the PA recommends preparation of a site investigation (SI), work on that is begun as soon as the draft PA has been reviewed. In a few cases each year, sites are so patently contaminated, the Bureau goes directly to an SI -- effectively merging the PA and SI. Roughly 10 SIs are done for 45 PAs. SIs take 4 - 8 months to prepare and review. The preliminary hazard ranking score (HRS) is an SI product.

MAY 11 1990

## HAZARDOUS MATERIALS CONTAMINATED SITES

ST	County	Site Name	Status
AK		Red Devil Mine Waste Ponds	SI done
AK		Sagwon Airstrip	SI done
CA	Afton	Afton Canyon/Union Pacific Railroad	Remediated
CA		Atlas Asbestos	RI/FS in progress
CA	Santa Barbara	Cuyama Drug Lab	Remediated
CA		El Capitan Quarry	Remediated
CA	Lassen	Lassen College Site	Remediated
CA		Stateline Dump	ESI in progress
ID		Bruneau Open Dump	Remediated
ID		Central Cove Landfield	ESI in progress
ID		Champagne Creek	Remediated
ID	Idaho	Elk City Cyanide Leach Operation	Remediated
ID	Minidoka	German Lake	SI done
ID		Gwinn Cave (Shoshone)	Controlled, under study
ID	Twin Falls	Murtaugh (East) LDFL (AKA Twin Falls)	ESI in progress
MT	Beaver-head	Thorium City Waste Dump	Remediated
MT		Londonderry Adit	SI in progress
NM		Anthony Landfill	SI done
NM		Artesia Landfill	SI done
NM	San Juan	Bloomfield Landfill	ESI in progress
NM	Eddy	Carlsbad Landfill	SI done
NM	San Juan	Flora Vista Landfill	ESI in progress
NM		I & W Oil Service Roswell	SI in progress
NM	Berna-lillo	Kirtland Landfill	SI done
NM	Dona Ana	La Union Landfill	ESI in progress
NM		Las Cruces Landfill	SI done
NM	San Juan	Lee Acres Landfill	RI/FS in progress

ST	County	Site Name	Status
NM		Loco Hills Landfill	SI done
NM	Dona Ana	Mesilla Landfill	ESI in progress
NM	Eddy	Potash Company of America (PCA)	Remediated
NM	San Juan	Farmington South Landfill	SI done
NV	Lander	Antelope Valley Pesticide Site	SI done
NV	Humboldt	Quinn River Valley Pesticide Disposal	SI done
NV	Lincoln	Union Pacific Row (UP)	Remediated
NV	White Pine	Silverado Millsite	SI in progress
NV	Mineral	Pine Grove Flat	SI in progress
NV	Douglas	Douglas County Sanitary Landfill	SI in progress
NV	Clark	Osage Industries Millsite	SI in progress
NV		Sandy Valley	SI in progress
OR		Lytle Boulevard Dump	Remediated
OR		Merlin Landfill	SI done
OR		Minexco Mill Site	SI done
OR		Slides Dump	SI done
OR		Vale, City of, Dumpsite	Remediated
WA		Kabba-Texas Mine	SI done
WA		Oroville Landfill	ESI in progress
UT	Uintah	Chevron Red Wash Unit	Remediated
UT	San Juan	Cottonwood Canyon	Remediated
UT	Iron	Desert Mound Mine	Remediated
UT		East Summit Mining Claims	Remediated
UT	San Juan	Frye Canyon Tailing	Remediated
UT	Utah	Ireco Chemical	Remediated
UT		Mercur Canyon Outwash	SI done
UT	Grand	Ore Buyin Station - Moab	Remediated
UT	Summit	Silver Maple Claims	Remediated

377  
29/88



IN REPLY REFER TO:

# United States Department of the Interior

BUREAU OF LAND MANAGEMENT  
CALIFORNIA STATE OFFICE  
2800 Cottage Way  
Sacramento, California 95825

1703  
(CA-932.7)

NOV 18 1988

Memorandum

To: Director (509), Room 3529, MIB  
Thru: Myra Musialkiewicz, Program Analyst - Hazardous Materials Staff  
From: Deputy State Director, Lands & Renewable Resources  
Subject: FY 1990 Budget Justifications - Request for Photos

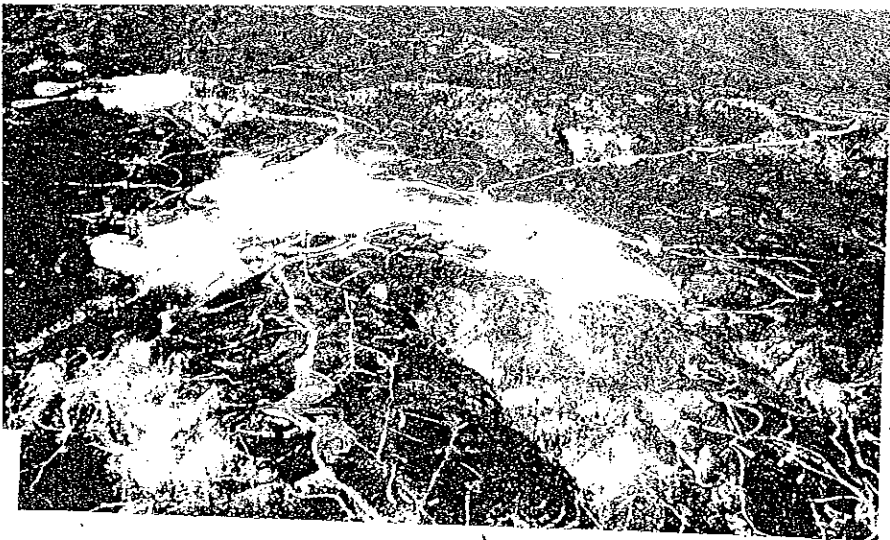
In response to the WO 509 memo dated October 17, 1988, black and white photographs depicting hazardous materials related activities were requested from all California BLM Field Offices. Only the Bakersfield office responded with three (3) snapshots of the Atlas Mine National Priority List Site (attached).

In the future, increased efforts will be made to record hazardous materials activities including video taping.

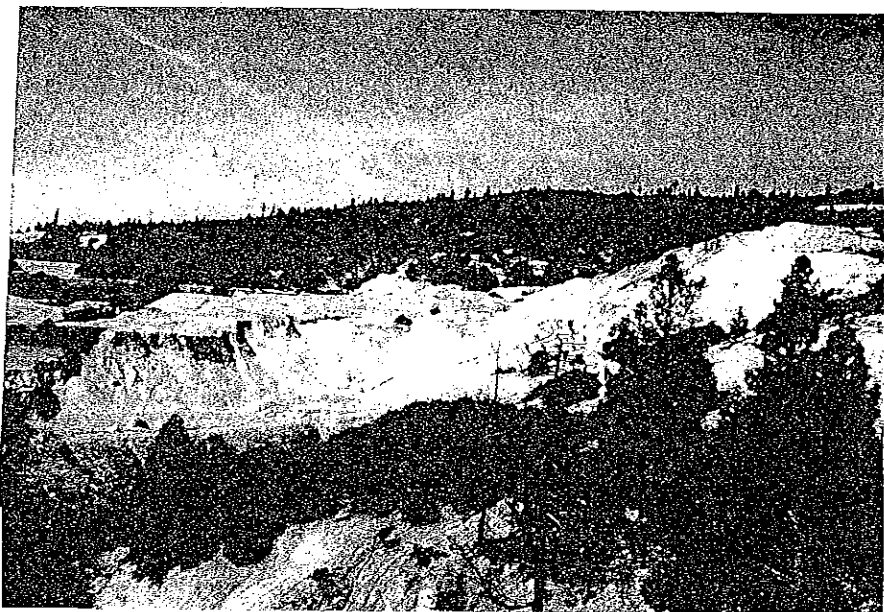
If you have further questions, please contact Lois Payne or David Padgett at FTS 460-4725 or (916) 978-4725.

Attachment  
As Stated

Mine NPL site  
12/1 oblique view



After Mine Spoil Site



After Mine NPL site  
gravel road

